

INSTRUMENTAL

MUSIC

RUBRICS

2008 LHS Music Winter Band Concert

	5	4	3	2	1
Rhythm	_____	_____	_____	_____	_____
Notes	_____	_____	_____	_____	_____
Articulation	_____	_____	_____	_____	_____
Tone	_____	_____	_____	_____	_____
Steady Beat	_____	_____	_____	_____	_____
Posture	_____	_____	_____	_____	_____

Rhythm: counting, correct duration of sounds and rests in relation to the beat and to each other.

Notes: correct pitch, observation of the key signature. Percussion: note reading on bells.

Articulation: tonguing and slurring, observation of staccato, legato, accents, etc.

Percussion: execution of flams, rolls, etc.

Tone: sound production, embouchure (mouth position), playing in tune. Percussion: correct grip on sticks.

Steady Beat: even, appropriate tempo (speed) throughout piece.

Posture: sitting up straight and using correct hand and head positions.

5 = Excellent: no errors or irregularities; continue on present course.

4 = Very Good: no more than 3 errors or minor irregularities; practice more at home.

3 = Good: no more than 5 errors, but skills need refinement; pay closer attention to details while practicing.

2 = Fair: skills need significant work; more consistent practice time is needed at home.

1 = Poor: significant problems with skills; daily practice and private lessons may be a solution.

After rating yourself, write one page about the preparation/performance of the 2008 LHS Music Winter Band Concert. Your assignment will be assessed in the following way:

- 2 points Name, due date, and class/period are in upper left corner
- 2 points Paper is typed and double-spaced
- 1 point This paper is stapled to front of your composition
- 5 points Spelling and grammar are correct
- 10 points each All comments are, well constructed, detailed, and incorporate precise musical terminology



LHS Music

Rehearsal Skills Assessment Rubric

4 Exceeds Standard (90 or above)

The student is consistently punctual and prepared and always participates at a high level with a positive and productive attitude and willingness to learn.

3 Meets Standard (77-89)

The student is generally punctual and prepared and always participates at an acceptable level with a generally positive and productive attitude and willingness to learn.

2 Minimal Standard (60-76)

The student has difficulty being punctual and prepared and/or has some difficulty participating at an acceptable level with a positive and productive attitude and willingness to learn.

1 Below Standard (below 59)

The student has significant difficulty being punctual and prepared and/or does not participate at an acceptable level or with a positive and productive attitude and willingness to learn.

I have read the above:

Student's Name _____

Student's Signature _____

Parent's Name _____

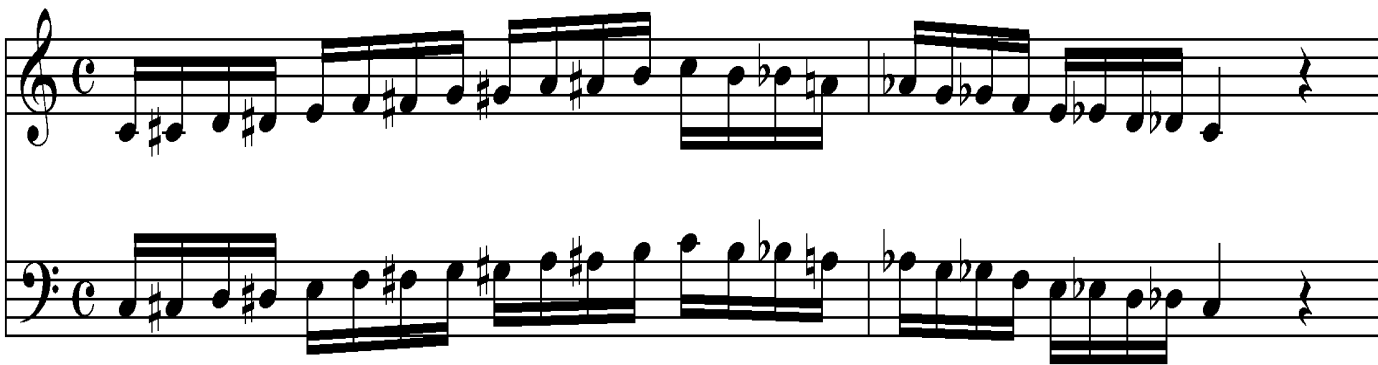
Parent's Initials _____

All LHS Symphonic Band students will play one 2 octave major scale and one 1 octave chromatic scale of their choice each quarter. The scales are to be performed in the following manner:

Moderato ♩ = 60-72



Moderato ♩ = 60-72



You will be assessed in the following way:

- 1 90-100 sound, pitch, rhythm, and posture are all excellent
- 2 80-89 sound, pitch, rhythm, or posture is excellent or good
- 3 70-79 sound, pitch, rhythm, or posture is not always good
- 4 60 thanks for trying